



US Micro Products
Electronic Products for the OEM

OLED PRODUCT SPECIFICATION

Manufactured by:



PART NUMBER:	USMP-P23701
DESCRIPTION:	1.1" OLED, White, 128x36 pixels, COG, SSD 0301

ISSUE DATE	APPROVED BY (Customer Use Only)	CHECKED BY	PREPARED BY
PROPRIETARY NOTE:	THIS SPECIFICATION IS THE PROPERTY OF US MICRO PRODUCTS AND SHALL NOT BE REPRODUCED OR COPIED WITHOUT THE WRITTEN PERMISSION OF US MICRO PRODUCTS AND MUST BE RETURNED TO US MICRO PRODUCTS UPON ITS REQUEST.		

REVISION RECORD

REV.	REVISION DESCRIPTION	REV. DATE	REMARK
X01	■ INITIAL RELEASE	2009. 07. 15	
X02	<ul style="list-style-type: none"> ■ Change IC ■ Add D.C electrical characteristics ■ Modify single tape ■ Add packing specification 	2009. 10. 05	Page 4, 7, 9, 14, 16 & 17
X03	<ul style="list-style-type: none"> ■ Add IC specifications ■ Add the operating conditions for different luminance ■ Add the panel electrical specifications ■ Add the application circuit 	2009. 11. 05	Page 6, 7, 8, 10, 11, 12, 13 & 14
A01	<ul style="list-style-type: none"> ■ Transfer from X version ■ Add the information of module weight 	2010. 01. 05	Page 5

CONFIDENTIAL

CONTENTS

ITEM	PAGE
<u>1. SCOPE</u>	4
<u>2. WARRANTY</u>	4
<u>3. FEATURES</u>	4
<u>4. MECHANICAL DATA</u>	5
<u>5. MAXIMUM RATINGS</u>	6
<u>6. ELECTRICAL CHARACTERISTICS</u>	7
6.1 D.C ELECTRICAL CHARACTERISTICS	
6.2 ELECTRO-OPTICAL CHARACTERISTICS	
<u>7. INTERFACE</u>	9
7.1 FUNCTION BLOCK DIAGRAM	
7.2 PANEL LAYOUT DIAGRAM	
7.3 PIN ASSIGNMENTS	
7.4 GRAPHIC DISPLAY DATA RAM ADDRESS MAP	
7.5 INTERFACE TIMING CHART	
<u>8. POWER ON / OFF SEQUENCE & APPLICATION CIRCUIT</u>	13
8.1 POWER ON / OFF SEQUENCE	
8.2 APPLICATION CIRCUIT	
8.3 COMMAND TABLE	
<u>9. RELIABILITY TEST CONDITIONS</u>	15
<u>10. EXTERNAL DIMENSION</u>	16
<u>11. PACKING SPECIFICATION</u>	17
<u>12. APPENDIXES</u>	18

CONFIDENTIAL

1. SCOPE

The purpose of this specification is to define the general provisions and quality requirements that apply to the supply of display cells manufactured by RiTdisplay. This document, together with the Module Assembly Drawing, is the highest-level specification for this product. It describes the product, identifies supporting documents and contains specifications.

2. WARRANTY

RiTdisplay warrants that the products delivered pursuant to this specification (or order) will conform to the agreed specifications for twelve (12) months from the shipping date ("Warranty Period"). RiTdisplay is obligated to repair or replace the products which are found to be defective or inconsistent with the specifications during the Warranty Period without charge, on condition that the products are stored or used as the conditions specified in the specifications. Nevertheless, RiTdisplay is not obligated to repair or replace the products without charge if the defects or inconsistency are caused by the force majeure or the reckless behaviors of the customer.

After the Warranty Period, all repairs or replacements of the products are subject to charge.

3. FEATURES

- Small molecular organic light emitting diode.
- Color : White
- Panel resolution : 128*36
- Driver IC : SPD0301
- Excellent Quick response time : 10 μ s
- Extremely thin thickness for best mechanism design : 1.0 mm
- High contrast : 2000:1
- Wide viewing angle : 160°
- Strong environmental resistance.
- 8-bit 6800/8080-series parallel interface, Serial Peripheral Interface, I²C Interface.
- Wide range of operating temperature : -40 to 70°C

4. MECHANICAL DATA

NO	ITEM	SPECIFICATION	UNIT
1	Dot Matrix	128 x 36	dot
2	Dot Size	0.19 (W) x 0.19 (H)	mm ²
3	Dot Pitch	0.21 (W) x 0.21 (H)	mm ²
4	Aperture Rate	82	%
5	Active Area	26.86 (W) x 7.54 (H)	mm ²
6	Panel Size	31 (W) x 14.3 (H)	mm ²
7	Panel Thickness	1.0 ± 0.1	mm
8	Module Size	31 (W) x 22.3 (H) x 1.0 (T)	mm ³
9	Diagonal A/A size	1.1	inch
10	Module Weight	1.0 ± 10%	gram

CONFIDENTIAL

5. MAXIMUM RATINGS

ITEM	MIN	MAX	UNIT	Condition	Remark
Supply Voltage (V _{DD})	-0.3	4	V	Ta = 25°C	IC maximum rating
Supply Voltage (V _{CC})	8	17	V	Ta = 25°C	IC maximum rating
Operating Temp.	-40	70	°C		
Storage Temp	-40	85	°C		
Humidity	-	85	%		
Life Time	10,000	-	Hrs	600 cd/m ² , 50% checkerboard	Note (1)
Life Time	15,000	-	Hrs	450 cd/m ² , 50% checkerboard	Note (2)
Life Time	20,000	-	Hrs	300 cd/m ² , 50% checkerboard	Note (3)

Note:

(A) Under V_{CC} = 12V

(B) Life time is defined the amount of time when the luminance has decayed to less than 50% of the initial measured luminance.

(1) Setting of 600cd/m² : (without polarizer)

- Contrast setting : 0xc4
- Frame rate : 105Hz
- Duty setting : 1/36

(2) Setting of 450cd/m² : (without polarizer)

- Contrast setting : 0x8a
- Frame rate : 105Hz
- Duty setting : 1/36

(3) Setting of 300cd/m² : (without polarizer)

- Contrast setting : 0x55
- Frame rate : 105Hz
- Duty setting : 1/36

CONFIDENTIAL

6. ELECTRICAL CHARACTERISTICS

6.1 D.C ELECTRICAL CHARACTERISTICS

SYMBOL	PARAMETER	TEST CONDITION	MIN	TYP	MAX	UNIT
V _{CC}	Operating Voltage	-	11.5	12	12.5	V
V _{DD}	Logic Supply Voltage	-	1.65	-	3.3	V
V _{OH}	High Logic Output Level	I _{OUT} = 100uA, 3.3MHz	0.9* V _{DD}	-	-	V
V _{OL}	Low Logic Output Level	I _{OUT} = 100uA, 3.3MHz	-	-	0.1*V _{DD}	V
V _{IH}	High Logic Input Level	-	0.8* V _{DD}	-	-	V
V _{IL}	Low Logic Input Level	-	-	-	0.2*V _{DD}	V
I _{DD, SLEEP}	Sleep mode Current	V _{DD} = 1.65V~3.3V, V _{CC} = 7V~16V Display OFF, No panel attached	-	-	10	uA
I _{CC, SLEEP}	Sleep mode Current	V _{DD} = 1.65V~3.3V, V _{CC} = 7V~16V Display OFF, No panel attached	-	-	10	uA
I _{CC}	V _{CC} Supply Current V _{DD} = 2.8V, V _{CC} = 12, I _{REF} = 10uA, No Panel attached, Display ON, All ON	Contrast = FFh	-	450	580	uA
I _{DD}	V _{DD} Supply Current V _{DD} = 2.8V, V _{CC} = 12, I _{REF} = 10uA , No Panel attached, Display ON, All ON,		-	90	110	uA
I _{SEG}	Segment Output Current, V _{DD} = 2.8V, V _{CC} = 12V, I _{REF} = 10uA, Display ON.	Contrast=FFh	280	310	340	uA
		Contrast=AFh	-	215	-	
		Contrast=7Fh	-	155	-	
		Contrast=3Fh	-	78	-	
		Contrast=0Fh	-	20	-	

CONFIDENTIAL

6.2 ELECTRO-OPTICAL CHARACTERISTICS

PANEL ELECTRICAL SPECIFICATIONS

PARAMETER	MIN	TYP.	MAX	UNITS	COMMENTS
Normal mode current consumption	-	18	20	mA	All pixels on
Standby mode current consumption	-	1	2	mA	Standby mode 10% pixels on
Normal mode power consumption	-	216	240	mW	All pixels on
Standby mode power consumption	-	12	24	mW	Standby mode 10% pixels on
Pixel Luminance	500	600		cd/m ²	Display Average
Standby Luminance		100		cd/m ²	
CIE _x (White)	0.28	0.31	0.34		CIE1931
CIE _y (White)	0.30	0.33	0.36		CIE1931
Dark Room Contrast	2000:1				
Viewing Angle	160			degree	
Response Time		10		μs	

(1) Normal mode condition : (without polarizer)

- Driving Voltage : 12V
- Contrast setting : 0xc4
- Frame rate : 105Hz
- Duty setting : 1/36

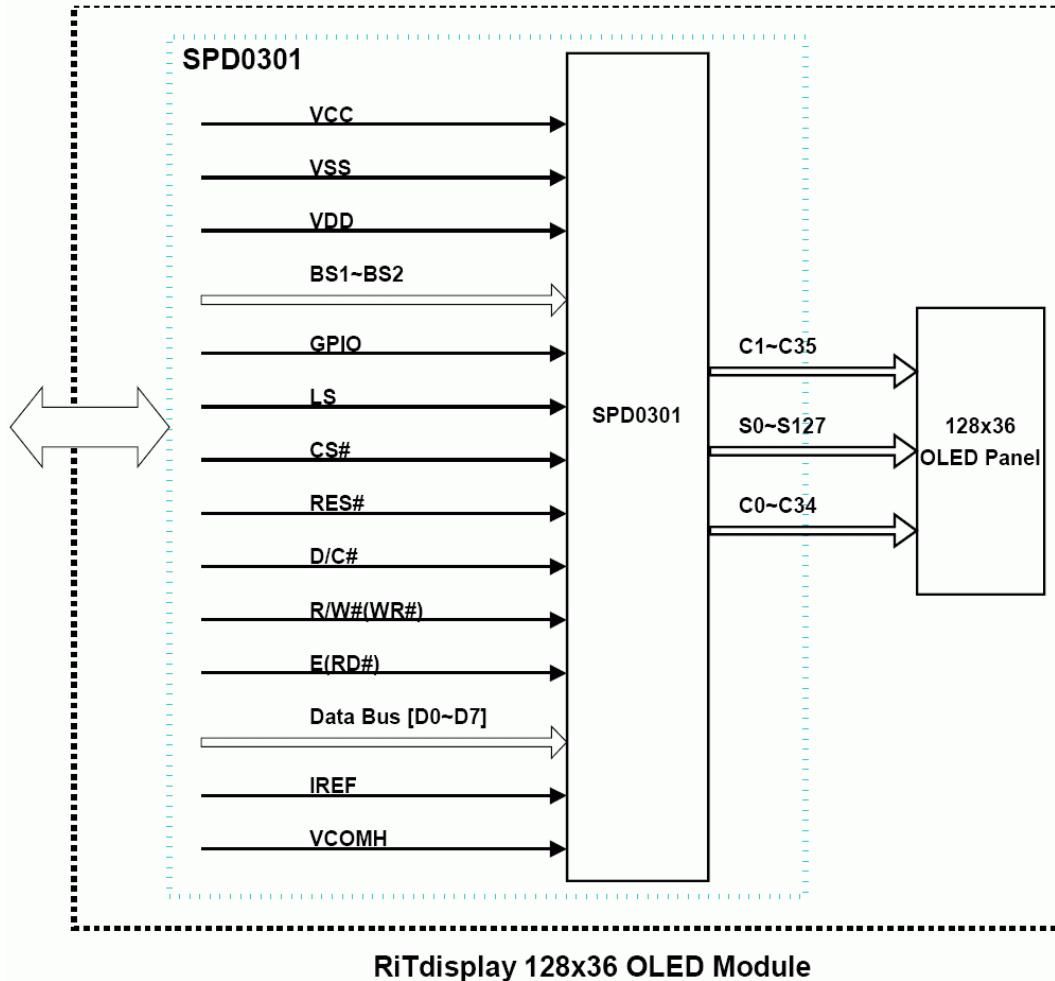
(2) Standby mode condition : (without polarizer)

- Driving Voltage : 12V
- Contrast setting : 0x15
- Frame rate : 105Hz
- Duty setting : 1/36

CONFIDENTIAL

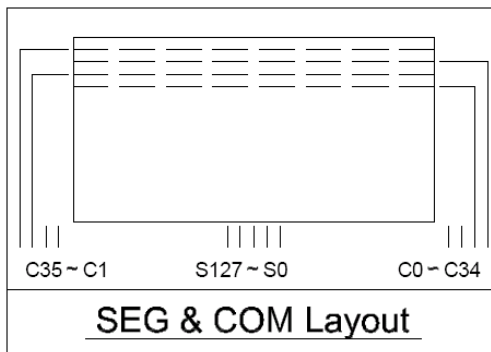
7. INTERFACE

7.1 FUNCTION BLOCK DIAGRAM



CONFIDENTIAL

7.2 PANEL LAYOUT DIAGRAM



7.3 PIN ASSIGNMENTS

PIN NO.	PIN NAME	DESCRIPTION
1	VCC	Power supply for panel driving voltage.
2	VSS	Ground pin.
3	VDD	Power supply pin for core logic operation.
4	BS1	MCU bus interface selection pins.
5	BS2	
6	GPIO	General-purpose I/O pin.
7	LS	This is a layout selection pin. When this pin is pulled LOW, 128 column address mapping is chosen. When this pin is pulled HIGH, pseudo 132 column address mapping is chosen. Note that the pseudo 132 column address mapping is only appropriate for symmetrical layout design.
8	CS#	This pin is the chip select input connecting to the MCU.
9	RES#	This pin is reset signal input.
10	D/C#	This pin is Data/Command control pin connecting to the MCU.
11	R/W#(WR#)	This pin is read / write control input pin connecting to the MCU interface. 8080: data write enable pin; 6800:Read/Write select pin. When serial or I ² C interface is selected, this pin must be connected to VSS.
12	E(RD#)	8080: data read enable pin; 6800:Read/Write enable pin. When serial or I ² C interface is selected, this pin must be connected to VSS.
13	D0	These pins are bi-directional data bus connecting to the MCU data bus.
14	D1	
15	D2	When serial interface mode is selected, D0 will be the serial clock input: SCLK; D1 will be the serial data input: SDIN and D2 should be kept NC.
16	D3	
17	D4	When I ² C mode is selected, D2, D1 should be tied together and serve as SDA _{out} , SDA _{in} in application and D0 is the serial clock input, SCL.
18	D5	
19	D6	
20	D7	
21	IREF	This pin is the segment output current reference pin. A resistor should be connected between this pin and VSS.
22	VCOMH	COM signal deselected voltage level. A capacitor should be connected between this pin and VSS.
23	VCC	Power supply for panel driving voltage.
24	VSS	Ground pin.

CONFIDENTIAL

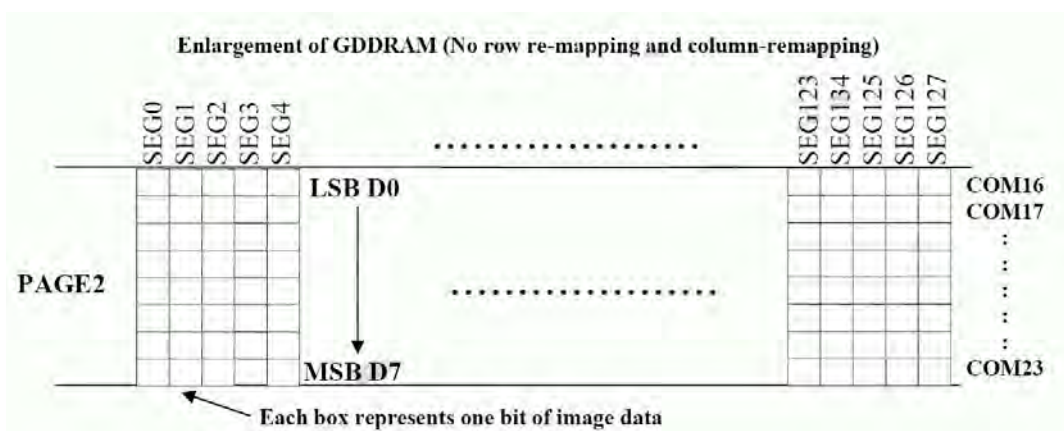
7.4 GRAPHIC DISPLAY DATA RAM ADDRESS MAP

The GDDRAM is a bit mapped static RAM holding the bit pattern to be displayed. The size of the RAM is 128 x 64 bits and the RAM is divided into eight pages, from PAGE0 to PAGE7, which are used for monochrome 128x64 dot matrix display, as shown in below figures.

GDDRAM pages structure of SPD0301

PAGE0 (COM0-COM7)	Page 0	Row re-mapping PAGE0 (COM 63-COM56)
PAGE1 (COM8-COM15)	Page 1	PAGE1 (COM 55-COM48)
PAGE2 (COM16-COM23)	Page 2	PAGE2 (COM47-COM40)
PAGE3 (COM24-COM31)	Page 3	PAGE3 (COM39-COM32)
PAGE4 (COM32-COM39)	Page 4	PAGE4 (COM31-COM24)
PAGE5 (COM40-COM47)	Page 5	PAGE5 (COM23-COM16)
PAGE6 (COM48-COM55)	Page 6	PAGE6 (COM15-COM8)
PAGE7 (COM56-COM63)	Page 7	PAGE7 (COM 7-COM0)
	SEG0 -----SEG127	
Column re-mapping	SEG127 -----SEG0	

When one data byte is written into GDDRAM, all the rows image data of the same page of the current column are filled (i.e. the whole column (8 bits) pointed by the column address pointer is filled.). Data bit D0 is written into the top row, while data bit D7 is written into bottom row as shown in below figures.



For mechanical flexibility, re-mapping on both Segment and Common outputs can be selected by software.

For vertical shifting of the display, an internal register storing the display start line can be set to control the portion of the RAM data to be mapped to the display (command D3h).

CONFIDENTIAL

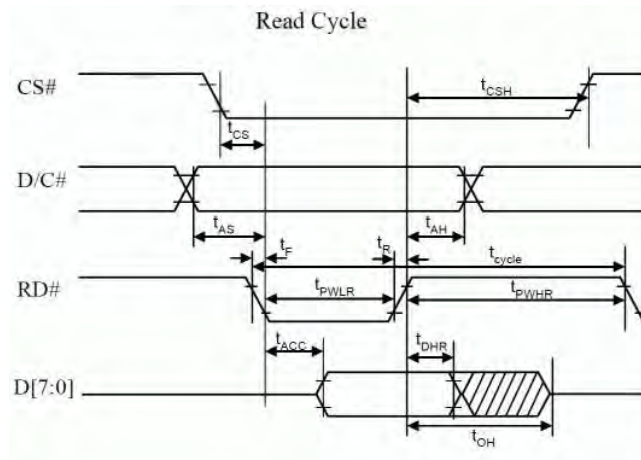
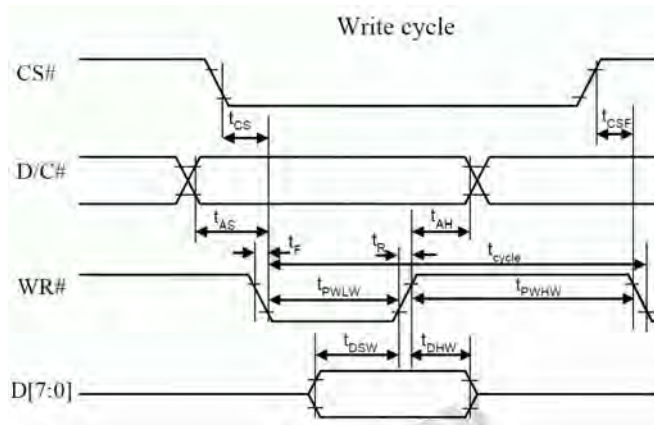
7.5 INTERFACE TIMING CHART

8080-Series MCU Parallel Interface Timing Characteristics

($V_{DD} - V_{SS} = 1.65V \sim 3.3V$ $T_A = 25^\circ C$)

Symbol	Parameter	Min	Typ	Max	Unit
t_{cycle}	Clock Cycle Time	300	-	-	ns
t_{AS}	Address Setup Time	10	-	-	ns
t_{AH}	Address Hold Time	0	-	-	ns
t_{DSW}	Write Data Setup Time	40	-	-	ns
t_{DHW}	Write Data Hold Time	7	-	-	ns
t_{DHR}	Read Data Hold Time	20	-	-	ns
t_{OH}	Output Disable Time	-	-	70	ns
t_{ACC}	Access Time	-	-	140	ns
t_{PWLr}	Read Low Time	120	-	-	ns
t_{PWLW}	Write Low Time	60	-	-	ns
t_{PWHr}	Read High Time	60	-	-	ns
t_{PWHW}	Write High Time	60	-	-	ns
t_r	Rise Time	-	-	40	ns
t_f	Fall Time	-	-	40	ns
t_{CS}	Chip select setup time	0	-	-	ns
t_{CSH}	Chip select hold time to read signal	0	-	-	ns
t_{CSF}	Chip select hold time	20	-	-	ns

8080-series parallel interface characteristics



CONFIDENTIAL

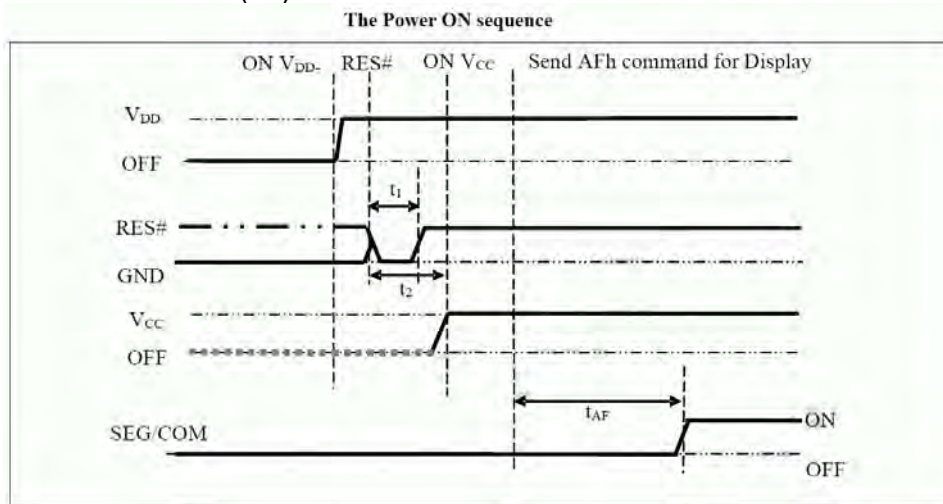
8. POWER ON / OFF SEQUENCE & APPLICATION CIRCUIT

8.1 POWER ON / OFF SEQUENCE

The following figures illustrate the recommended power ON and power OFF sequence of SPD0301

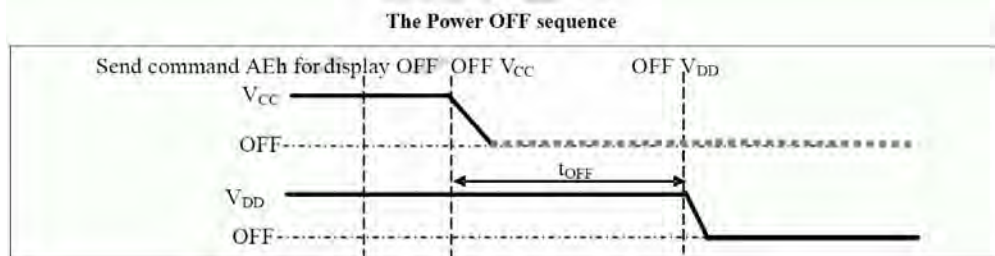
Power ON sequence:

1. Power ON V_{DD}
2. After V_{DD} become stable, set RES# pin LOW (logic low) for at least 3us (t_1)⁽³⁾ and then HIGH (logic high).
3. After set RES# pin LOW (logic low), wait for at least 3us (t_2). Then Power ON V_{CC} .⁽¹⁾
4. After V_{CC} become stable, send command AFh for display ON. SEG/COM will be ON after 100ms (t_{AF}).



Power OFF sequence:

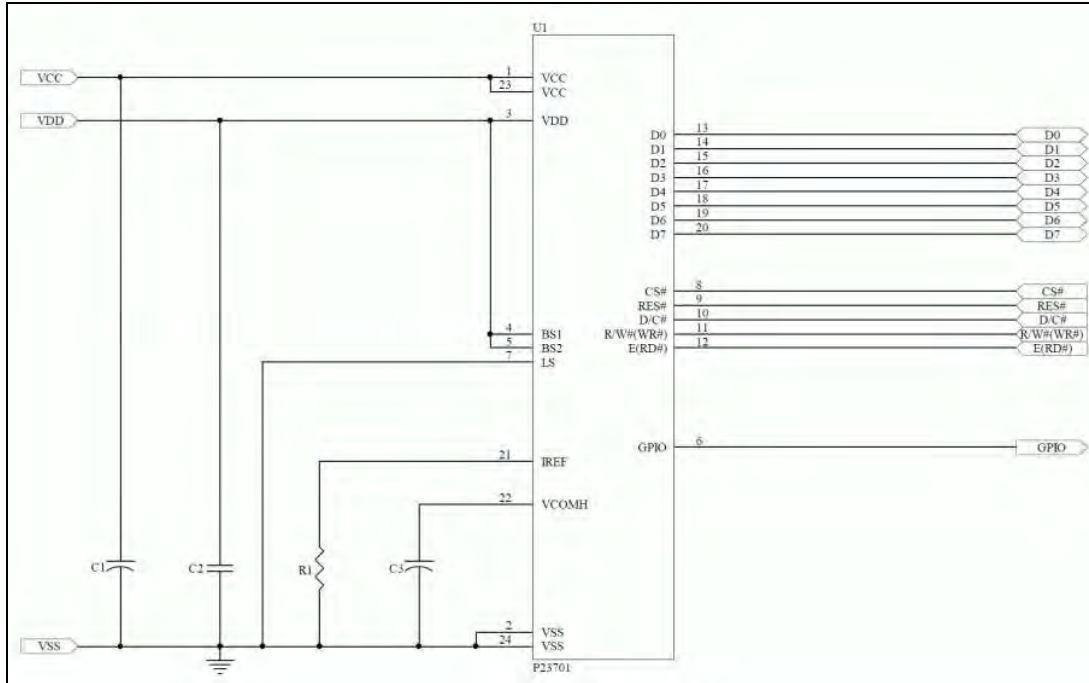
1. Send command AEh for display OFF.
2. Power OFF V_{CC} ^{(1), (2)}
3. Power OFF V_{DD} after t_{OFF} .⁽⁴⁾ (where Minimum t_{OFF} =80ms, Typical t_{OFF} =100ms)



Note:

- (1) V_{CC} should be disabled when it is OFF.
- (2) Power Pins (V_{DD} , V_{CC}) can never be pulled to ground under any circumstance.
- (3) The register values are reset after t_1 .
- (4) V_{DD} should not be Power OFF before V_{CC} Power OFF.

8.2 APPLICATION CIRCUIT



Recommend components:

- C1, C3: 4.7uF/25V (Tantalum type) or VISHAY (572D475X0025A2T)
- C2: 1uF/16V(0603)
- R1: 2M ohm (0603) 1%

This circuit is for 8080 8bits interface.

8.3 COMMAND TABLE

Refer to IC Spec.: SPD0301

CONFIDENTIAL

9. RELIABILITY TEST CONDITIONS

No.	Items	Specification	Quantity
1	High temp. (Non-operation)	85°C, 240hrs	5
2	High temp. (Operation)	70°C, 120hrs	5
3	Low temp. (Operation)	-40°C, 120hrs	5
4	High temp. / High humidity (Operation)	65°C, 90%RH, 120hrs	5
5	Thermal shock (Non-operation)	-40°C ~85°C (-40°C /30min; transit /3min; 85°C /30min; transit /3min) 1cycle: 66min, 100 cycles	5
6	Vibration	Frequency : 5~50HZ, 0.5G Scan rate : 1 oct/min Time : 2 hrs/axis Test axis : X, Y, Z	1 Carton
7	Drop	Height: 120cm Sequence : 1 angle · 3 edges and 6 faces Cycles: 1	1 Carton
8	ESD (Non-operation)	Air discharge model, ±8kV, 10 times	5

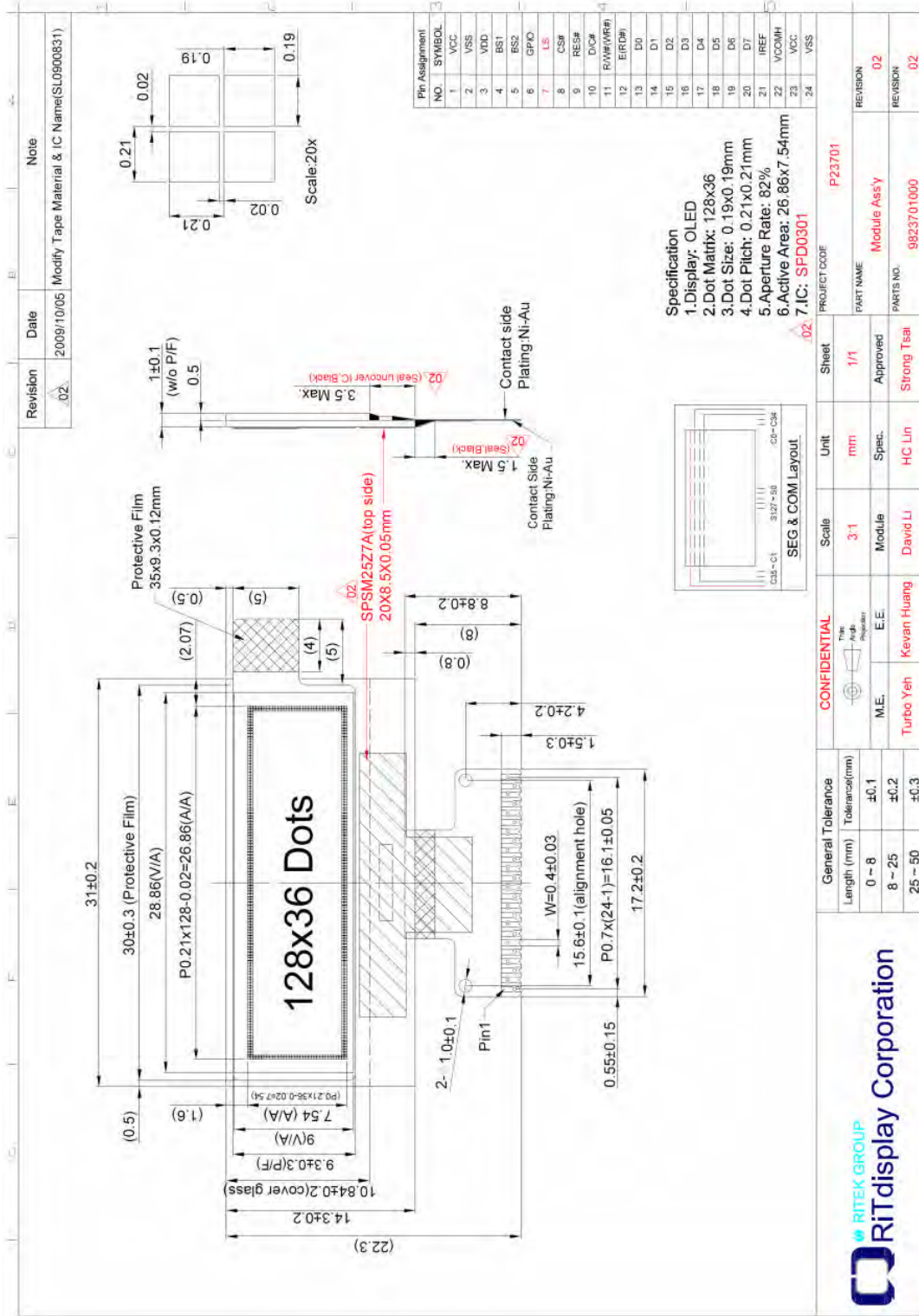
Test and measurement conditions

1. All measurements shall not be started until the specimens attain to temperature stability.
2. All-pixels-on is used as operation test pattern.

Evaluation criteria

1. The function test is OK.
2. No observable defects.
3. Luminance: > 50% of initial value.
4. Current consumption: within \pm 50% of initial value.

10. EXTERNAL DIMENSION



11. PACKING SPECIFICATION

Revision	Date	Note
01	2009/07/16	Packing Tray Instruction

ITEM	PART No.	DESC	QTY
1	9823701000	Module Assy For P23701	1
2	3008000222	Tray 330x270x8.7 T.O. 7mm PS P18004	2240
3	3010000003	5G Silica dryer Cobalt Dichloride Free	42
4	3003000012	Vacuum bag ONY/LDPE 450x285x90	8
5	3003000016	Antistatic Bubble bag 440x350x450mm	2
6	3001000005	Pizza Box 345x285x88 B corrugated	2
7	3000000009	Carton 385x305x203mm	1
8	3006000000	Label	3
9	3208000125	Tape -W=48mm, L=910cm	

General Tolerance		Scale	Unit	Sheet	PROJECT CODE
Length (mm)	Tolerance(mm)	1:15	mm	1/1	P23701
0 - 8	±0.1				
8 - 25	±0.2				
25 - 50	±0.3				

CONFIDENTIAL	M.E.	E.E.	Project Name	Version
Turbo Yeh	Turbo Yeh	Keven Huang	Packing Tray Instruction	01
		David Li	Parts No.	Version
		Tank Wang	9923701000	01
		Strong Tsai		

12. APPENDIXES

APPENDIX 1: DEFINITIONS

A. DEFINITION OF CHROMATICITY COORDINATE

The chromaticity coordinate is defined as the coordinate value on the CIE 1931 color chart for R, G, B, W.

B. DEFINITION OF CONTRAST RATIO

The contrast ratio is defined as the following formula:

$$\text{Contrast Ratio} = \frac{\text{Luminance of all pixels on measurement}}{\text{Luminance of all pixels off measurement}}$$

C. DEFINITION OF RESPONSE TIME

The definition of turn-on response time T_r is the time interval between a pixel reaching 10% of steady state luminance and 90% of steady state luminance. The definition of turn-off response time T_f is the time interval between a pixel reaching 90% of steady state luminance and 10% of steady state luminance. It is shown in Figure 2.

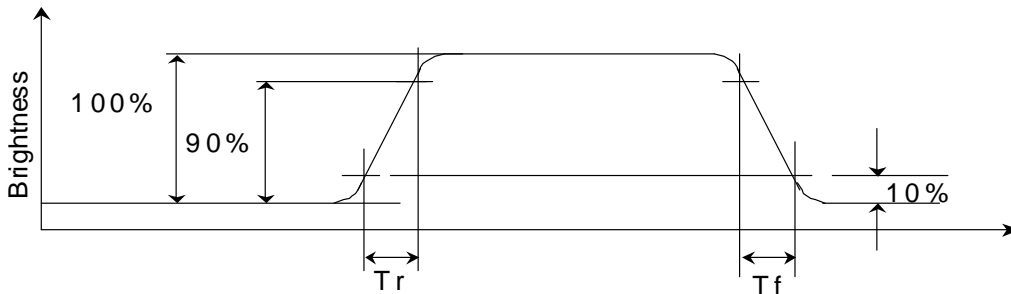


Figure 2 Response time

CONFIDENTIAL

D. DEFINITION OF VIEWING ANGLE

The viewing angle is defined as Figure 3. Horizontal and vertical (H & V) angles are determined for viewing directions where luminance varies by 50% of the perpendicular value.

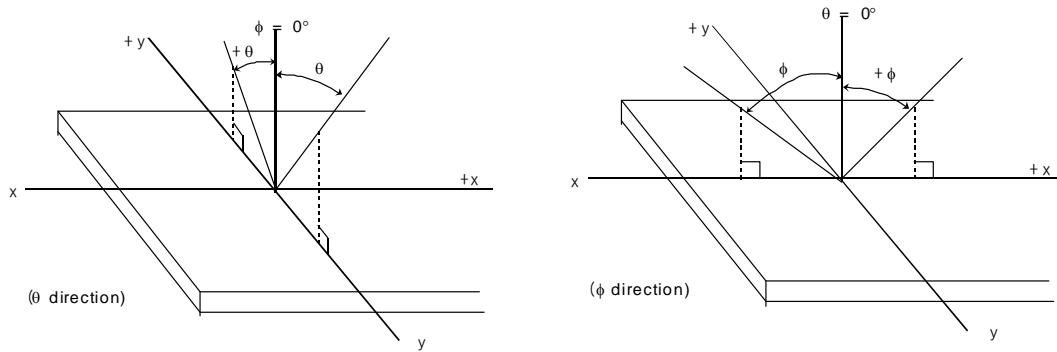


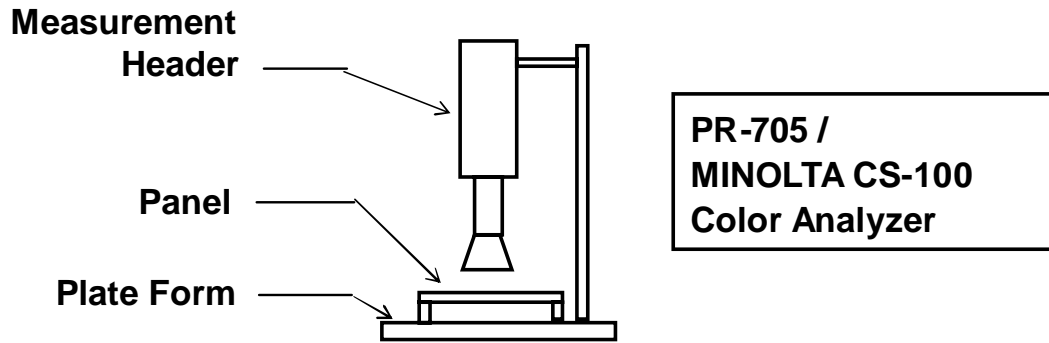
Figure 3 Viewing angle

CONFIDENTIAL

APPENDIX 2: MEASUREMENT APPARATUS

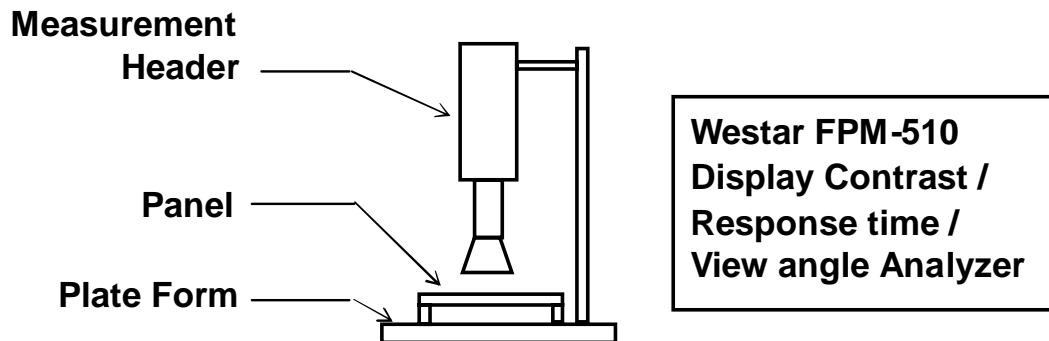
A. LUMINANCE/COLOR COORDINATE

PHOTO RESEARCH PR-705, MINOLTA CS-100



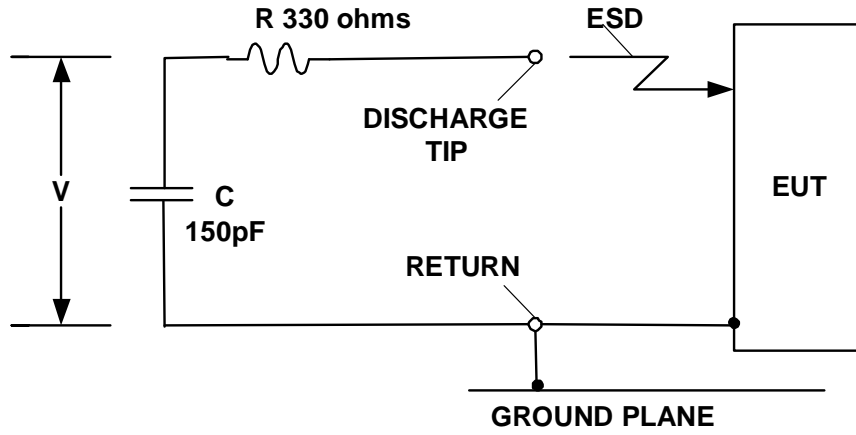
B. CONTRAST / RESPONSE TIME / VIEWING ANGLE

WESTAR CORPORATION FPM-510



CONFIDENTIAL

C. ESD ON AIR DISCHARGE MODE



CONFIDENTIAL

APPENDIX 3: PRECAUTIONS

A. RESIDUE IMAGE

Because the pixels are lighted in different time, the luminance of active pixels may reduce or differ from inactive pixels. Therefore, the residue image will occur. To avoid the residue image, every pixel needs to be lighted up uniformly.

CONFIDENTIAL



Displays

US Micro Products is an industrial distributor specializing in engineered display solutions. We dedicate ourselves to providing the best in displays for the medical, industrial, gaming, automotive, aerospace, military and consumer markets.

OLEDs



TFT Display



Open Frame Monitors



Passive LCDs



Multitouch



Touch Screen



As our customer, you receive expert knowledge, support and service. Our technical sales staff and experienced design engineers provide answers to your questions and engineered solutions to meet your display needs.

Peripheral Devices

Our full line of peripheral devices includes keyboards, trackballs and printers. These rugged industrial products are designed to meet the rigorous demands of your equipment and are available in a variety of standard and custom options.

Keyboards



Trackballs



Aerospace Trackballs



Printers

